



MONTHLY MEMBERSHIP PROGRESS REPORT

District C 1

Results as of: 4/30/2017

GMT: DENNIS STEVENSON

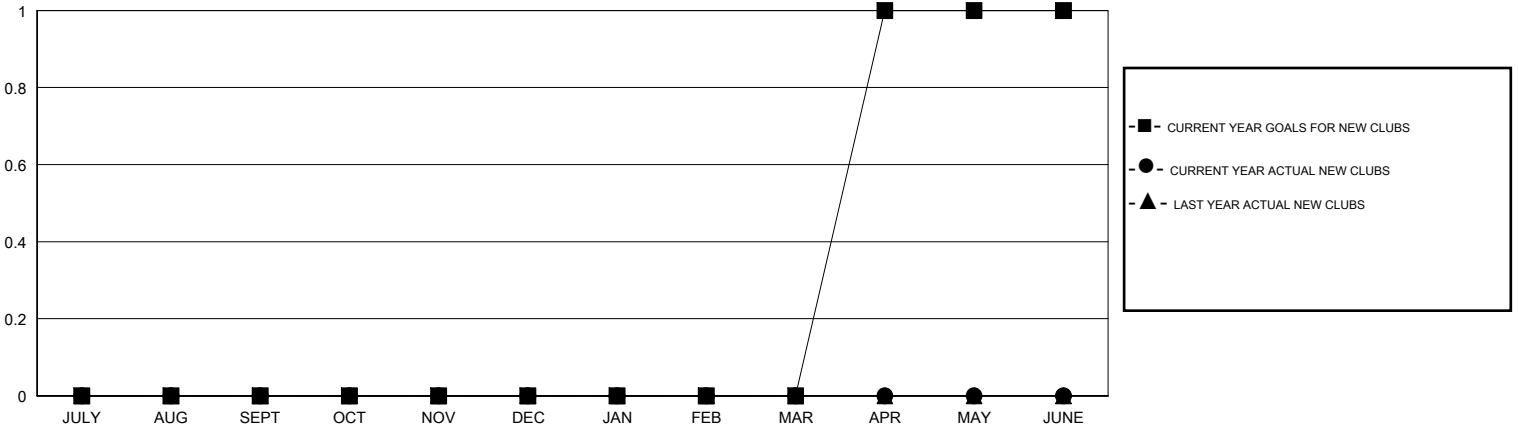
LOCATION ALBERTA

GMT CA

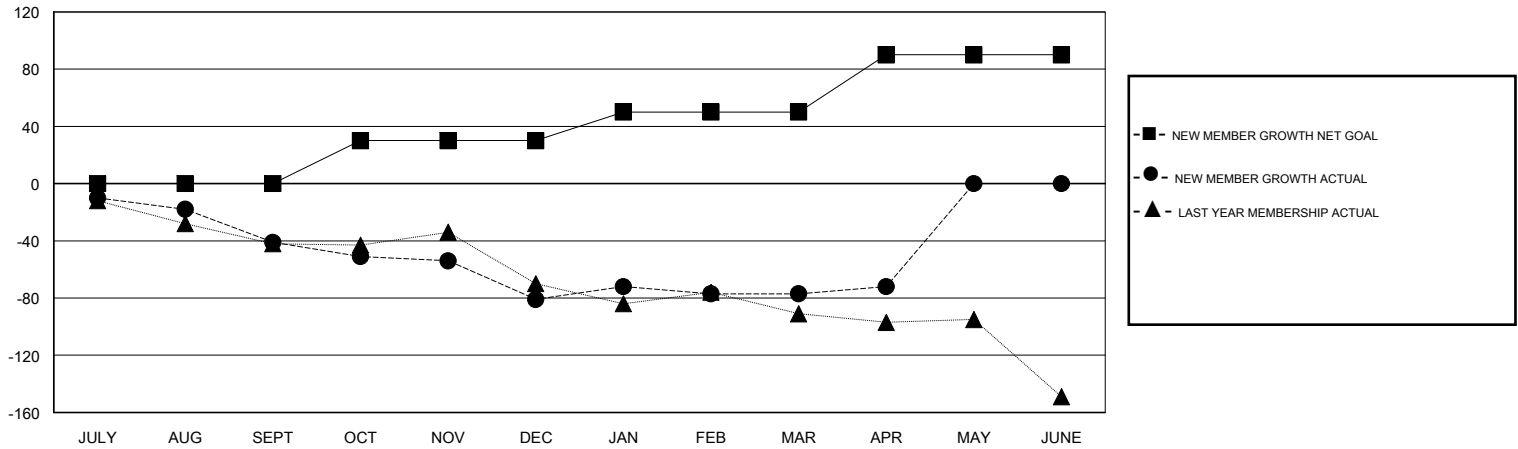
Clubs			
RESULTS FOR 2016-2017			
QUARTER	NEW CLUB GOAL	NEW CLUBS	DROPPED CLUBS
JULY/AUG/SEPT	0	0	1
OCT/NOV/DEC	0	0	1
JAN/FEB/MAR	0	0	1
APR/MAY/JUNE	1	0	0

Members			
RESULTS FOR 2016-2017			
QUARTER	NEW MEMBER GROWTH NET GOAL (not reinstated or transfers)	NEW MEMBER GROWTH ACTUAL (not reinstated or transfers)	DROPPED MEMBERS ACTUAL (including transfers)
JULY/AUG/SEPT	0	21	62
OCT/NOV/DEC	30	65	105
JAN/FEB/MAR	20	70	66
APR/MAY/JUNE	40	20	15

GOALS AND ACTUAL NEW CLUBS CUMULATIVE



GOALS AND ACTUAL MEMBERS CUMULATIVE



DROPPED CLUBS: 3	58 CLUBS OF 113 ADDED 1 OR MORE NEW MEMBERS	<u>GENDER DISTRIBUTION</u>	
		MALE	1,449 (63.97%)
DROPPED MEMBERS	CLICK HERE FOR CUMULATIVE MEMBERSHIP DATA	FEMALE	816 (36.03%)
		TOTAL FAMILY UNIT MEMBERS	482
		FAMILY MEMBERS PAYING HALF DUES	248
		TOTAL	248